



HRD AUCTION ROOMS

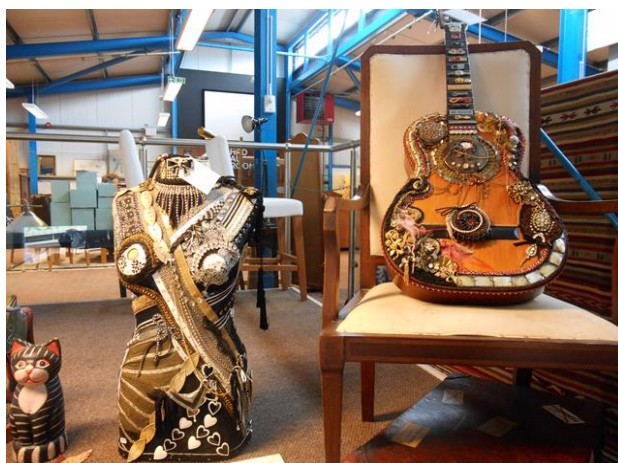
SATURDAY AUCTION

Modern & Vintage Furniture & Collectables, Electrical Goods, Jewellery & other interesting items including vintage clothing, a Skoda Fabia and a Toyota Avensis

Saturday 21st October 2017 at 10:00am

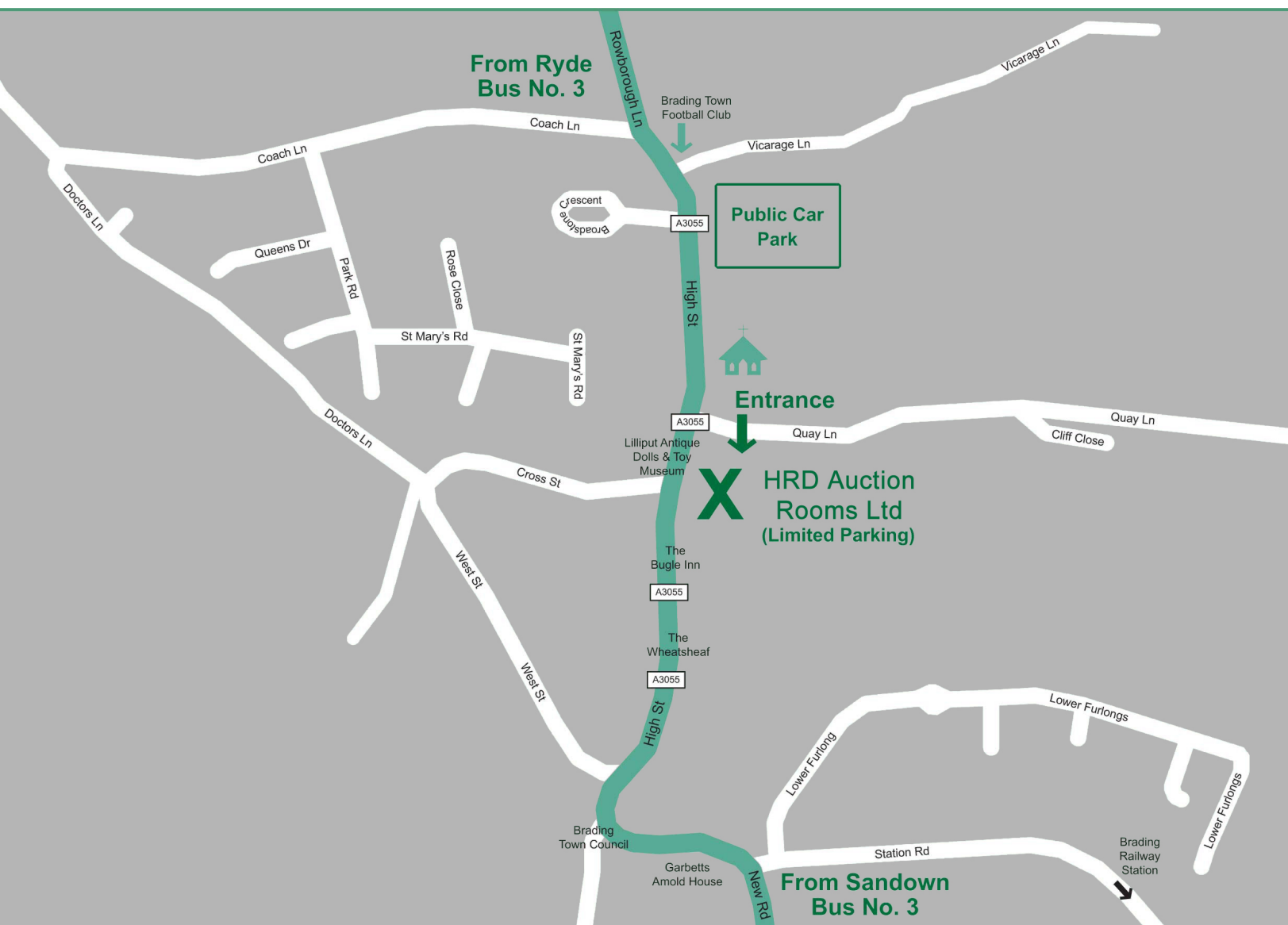
VIEWING: Friday 20th October 2017 9:30am-7pm, Sale Day 9am until sale starts

Brading Auction Rooms, Quay Lane, PO36 0AT
Tel: 01983 402222 Email: brading@hrdauctionrooms.co.uk



WELCOME TO HRD AUCTION ROOMS LTD

OUR AUCTION ROOMS ARE SITUATED JUST OFF BRADING HIGH STREET, BEHIND THE OLD WAXWORKS AND ARE ACCESSIBLE VIA QUAY LANE. THERE ARE DIRECTION SIGNS AT THE JUNCTION OF QUAY LANE AND THE HIGH STREET. CARS CAN BE PARKED IN THE LARGE PUBLIC CAR PARK NEAR ST MARY'S CHURCH.



TRAVEL BY ROAD:

From PORTSMOUTH, take the 'Wightlink' car ferry to Fishbourne and then drive to Brading via Ryde. From SOUTHAMPTON, take the 'Red Funnel' car ferry to East Cowes and then drive to Brading via Ryde.

TRAVEL BY RAIL:

London Waterloo to Portsmouth Harbour, then take the 'Wightlink' passenger catamaran to Ryde, and train to Brading. The saleroom is only a short distance from Brading station.



HRD AUCTION ROOMS

Please note all lots are subject to a buyers premium of 18% inc VAT

LOT 1	A Skoda Fabia 1 HTP 60, 1198cc, five door hatchback, blue, reg. HW10 KHJ, MOT until 21st September 2018, approx milage 26250	Guide £1,000-1,200
LOT 2	A Toyota Avensis GS VVT-I, 1.8 5 door hatchback, silver, reg. FE52 YVK, MOT until 1st November 2017, approx milage 94000	Guide £300-400
LOT 3	Two limited edition hunting prints, framed and glazed	Guide £20-30
LOT 4	Y Rushton - framed and glazed watercolour of sheep, together with a vintage coaching print	Guide £20-30
LOT 5	A glass sculpture depicting duck and ducklings, various paperweights etc	Guide £10-20
LOT 6	Winston Churchill - The Second World War, a History of the English Speaking Peoples, together with other Winston Churchill works	Guide £20-30
LOT 7	After Garman Morris - coloured print of sailing vessels, together with coloured engravings etc	Guide £10-20
LOT 8	A Victorian tripod table with chequered top on spiral column	Guide £30-50
LOT 9	A Chinese style hardwood chest of five drawers - W90cm	Guide £30-50
LOT 10	Various items of carnival glass, two ceramic elephants etc	Guide £10-20
LOT 11	Two framed posters, framed advertising print, together with ballet print	Guide £10-20
LOT 12	A pine filing chest of two drawers	Guide £20-40
LOT 13	A hardwood octagonal table with brass inlay and folding base	Guide £20-30
LOT 14	A ceramic figure of a spaniel	Guide £15-25
LOT 15	A pine chest of five drawers with turned handles - W80cm	Guide £20-40
LOT 16	An Art Nouveau style vase with wrythen handles, a Doulton stoneware vase, together with a cut glass bowl	Guide £20-40
LOT 17	G Bowers - A Month in the Midlands - album of coloured hunting prints	Guide £50-70
LOT 18	An oval gilt mirror with floral frame, together with one other mirror	Guide £20-40
LOT 19	A Stag hardwood dressing table with three drawers under - W120cm	Guide £30-50
LOT 20	A Portmeirion Botanic Garden jardiniere, together with seven pieces of Aynsley porcelain	Guide £20-30
LOT 21	A Portmeirion Botanic Garden lidded tureen with ladle	Guide £30-50
LOT 22	A Portmeirion 1970's 'Totem' coffee set designed by Susan Williams-Ellis	Guide £25-40
LOT 23	A bevelled wall mirror in egg and dart frame - overall size 105x65cm	Guide £30-50
LOT 24	The similar mirror	Guide £30-50
LOT 25	A wall mirror in scroll design gilt frame	Guide £20-30
LOT 26	A French needlework table with drawers under	Guide £30-50
LOT 27	A pine square occasional table with drawer under	Guide £20-30
LOT 28	A pine chest of two short and three long drawers with turned handles - W98cm	Guide £50-100
LOT 29	A half round hall table on tapered legs - W115cm	Guide £10-20
LOT 30	A C Baker, London electronic microscope, no.12513, cased	Guide £40-60
LOT 31	A BBC Gecophone (cabinet only)	Guide £10-20
LOT 32	A mid 20th century violin with two bows	Guide £20-40
LOT 33	A pair of framed and glazed floral prints	Guide £15-25
LOT 34	A vintage leather clad tape measure, a Pixie bakelite fishing reel etc	Guide £15-25
LOT 35	A brass inkwell, brass watch stand, together with a brass desk stand	Guide £20-40
LOT 36	A Wedgwood 1977 Silver Jubilee paperweight, together with four other Wedgwood domed paperweights	Guide £30-50
LOT 37	A Mdina swirl paperweight, Murano paperweight, together with one other in orchid design	Guide £30-50



HRD AUCTION ROOMS

LOT 38	An Okra limited edition nightshade paperweight, together with one other with dolphin design	Guide £25-40
LOT 39	A Paul Critchley paperweight, together with various Isle of Wight and other paperweights	Guide £20-30
LOT 40	A pair of tower shelf units in woodgrain finish	Guide £20-40
LOT 41	A pair of tower cabinets with glazed doors	Guide £20-40
LOT 42	A pine dresser, rack to back, drawers and cupboards under - W175cm	Guide £50-100
LOT 43	A pair of candle lamps, together with other lighting etc	Guide £20-30
LOT 44	A Mercedes Benz SLK boxed die cast vehicle, together with four other die cast model cars	Guide £20-40
LOT 45	An Inuit carved hardstone seal, together with a duck	Guide £50-80
LOT 46	An Inuit carved hardstone figure of an eskimo	Guide £50-80
LOT 47	A carved walrus ivory figure of a loon, signed Larry Mayac, together with a carved hardstone figure of a loon	Guide £30-50
LOT 48	Three Wallace & Gromit figures including a clock	Guide £20-40
LOT 49	Seven bottles of 2015 Kabinett Mosel	Guide £30-40
LOT 50	Five bottles of Campellina red wine	Guide £15-25
LOT 51	Various postcards and other ephemera	Guide £10-20
LOT 52	An Armand Marseille doll - L58cm	Guide £10-20
LOT 53	Six bottles of Duque de Montebello red wine, together with three other bottles of wine	Guide £20-30
LOT 54	Six bottles of Bor Forras Hungarian red wine, together with six bottles of Pieroth Blue white wine	Guide £25-40
LOT 55	A collection of vintage bottles etc	Guide £20-40
LOT 56	A pair of Victorian urns with pictorial panels	Guide £10-20
LOT 57	Six Lucas Film model Star Wars figures - Y-wing, The Interceptor, Star Destroyer, Jedi Star Fighter, Gungan Bongo and Speeder Bike	Guide £25-40
LOT 58	Six Lucas Film Star Wars figures - Slave I, Sith Speeder, Tie Advanced, 80-Walker, Star Destroyer Executor and Zam Airspeeder	Guide £25-40
LOT 59	Six Lucas Film Star Wars figures - AT-AT, Barc Speeder, Federation Cruiser, Naboo Star Fighter, STAP and Land Speeder	Guide £25-40
LOT 60	Six Lucas Film Star Wars figures - Death Star II, V-Wing, Sith Infill Traitor, Geonosian Fighter, 80/RT Walker and B-Wing	Guide £25-40
LOT 61	Six Lucas Film Star Wars figures - Arc-170 Star Fighter, Naboo Royal Cruiser, Millennium Falcon, Trade Federation AAT, Homing Spider Droid and Republic Attack gunship	Guide £25-40
LOT 62	Six Lucas Film Star Wars figures - Droid Tri-Fighter, Skiff, 80-ST Hailfire Droid, Trade Federation Droid Control Ship and Cloud City	Guide £25-40
LOT 63	Six Lucas Film Star Wars figures - General Grievous Star Fighter, The Bomber, Hypersonic Docking Ring, Naboo Queens Royal Starship, Sand Crawler and Owen's Swoop Bike	Guide £25-40
LOT 64	Six Lucas Film Star Wars figures - Snowspeeder, T-16 Skyhopper, Naboo Skiff, Corporate Alliance Tank Droid, Droid Star Fighter, Escape Pod	Guide £25-40
LOT 65	Six Lucas Film Star Wars figures - Clone Turbo Tank, Rebel Medium Transport, Cloud Car, Naboo Flash Speeder, Mon Calamari Star Cruiser and Tantive IV	Guide £25-40
LOT 66	Six Lucas Film Star Wars figures - Imperial Shuttle, Imperial Shuttle (Theta Class), X-Wing Fighter, Grievous Wheelbike, Republic Attack Cruiser III and Medical Escort Frigate	Guide £25-40
LOT 67	Seven Lucas Film Star Wars figures - The Fighter, MTT, The Crawler, Jabba the Hutt Sail barge, Thew Defender, Star Freighter and The Fighter	Guide £30-50
LOT 68	Six volumes of the official Star Wars fact file together with various other Star Wars magazines	Guide £30-50



HRD AUCTION ROOMS

LOT 69	A collection of various volumes on paperweight collecting	Guide £20-40
LOT 70	Six Lilliput Lane models including Periwinkle Cottage, Two David Winter models, together with one other	Guide £30-50
LOT 71	A pair of Highland Stoneware plates, A Highland Stoneware jug and a Buchan mug	Guide £20-30
LOT 72	A cased Hawkes & Son Superior Class three part clarinet	Guide £20-40
LOT 73	A collection of Bradford Exchange Winnie the Pooh figures, displayed on three shelves	Guide £30-50
LOT 74	Two wooden boxes, a tortoise ashtray, various canine figures etc	Guide £20-40
LOT 75	A pair of 12-60x70 zoom binoculars, airband scanner etc	Guide £20-30
LOT 76	A vintage copper hot water bottle	Guide £10-15
LOT 77	A Lladro figure of a girl with flowers, together with three Nao figures	Guide £30-50
LOT 78	A Whitefriars style vase, spiral paperweight and free form specimen vase, possibly Holmegaard	Guide £30-50
LOT 79	Seven Hummel figures, all depicting children	Guide £20-40
LOT 80	A vintage brass bulkhead clock frame, now containing quartz movement	Guide £20-30
LOT 81	A pair of Lieberman & Gortz 12x35 binoculars, replica pistol, and costume jewellery	Guide £25-40
LOT 82	Assorted cups and saucers including Spode and Royal Worcester	Guide £20-40
LOT 83	Leon Bertaux, oval bronze plaque depicting three cherubs, mounted on marble, the reverse bearing 1889 Exhibition medallion	Guide £80-120
LOT 84	A Royal Doulton figure - The Clockmaker, HN2279, together with a satsuma bowl	Guide £20-40
LOT 85	A Mahjong set with booklet	Guide £15-25
LOT 86	A bronze oil lamp base with scroll work decoration	Guide £40-50
LOT 87	A Mdina glass paperweight, two Mtarfa paperweights, playing cards etc	Guide £25-40
LOT 88	A Goebel Hummel table lamp (damaged), three Hummel figures, together with a Branksome china dog	Guide £25-40
LOT 89	A Phoenix millefiori paperweight, A Strathearn paperweight, together with two others	Guide £30-40
LOT 90	A Rye Pottery Scraffito plate by Raymond Everett	Guide £20-40
LOT 91	A millefiori paperweight marked B, a Strathearn paperweight, together with two others	Guide £30-40
LOT 92	A cased pair of Karl Zeiss binoculars - Prismatic no3 MkII	Guide £10-20
LOT 93	A Nikko radio controlled Mini (boxed)	Guide £20-25
LOT 94	A collection of die cast vintage buses and other vehicles, Corgi, Budgie, and other makes	Guide £30-50
LOT 95	A mirror in grape design frame	Guide £10-20
LOT 96	Various Peter Scott volumes, Winston Churchill volumes and other books including Highways & Byways by W F Rawnsley	Guide £30-50
LOT 97	Sanderson - King Edward VII - six volumes published by the Gresham Publishing Company	Guide £20-30
LOT 98	A collection of silver plate, mainly flatware	Guide £10-20
LOT 99	Various postcards, cigarette cards etc	Guide £15-25
LOT 100	Four Heritage model racing cars, together with nine similar but smaller racing cars	Guide £25-40
LOT 101	Time-Life books - The Civil War and The Old West	Guide £20-30
LOT 102	Various Millers reference books	Guide £10-20
LOT 103	Various prints and other pictures	Guide £10-15
LOT 104	An inlaid mahogany three tier cake stand	Guide £15-25
LOT 105	A reproduction mahogany side table with stretcher to base - W100cm	Guide £20-40
LOT 106	A Villeroy & Boch glass bowl with fan shaped design	Guide £40-60
LOT 107	A Spode turkey pattern meat platter	Guide £25-50



HRD AUCTION ROOMS

LOT 108	An Arts & Craft style oak wing settle with cane panels to back and lift up seat - L125cm	Guide £80-120
LOT 109	A six place setting gilt design canteen of cutlery	Guide £15-25
LOT 110	A Pears Soap advertising sign	Guide £10-20
LOT 111	A pine dresser with glazed cupboards to top, drawers and cupboards under - W155cm	Guide £50-100
LOT 112	A Wemyss G. Hill Pottery waisted vase with wild rose design, together with one other	Guide £40-60
LOT 113	Three Wemyss G. Hill Pottery miniature oval pedestal dishes	Guide £20-30
LOT 114	A Wemyss G. Hill Pottery limited edition figure of fisherwoman - H22cm	Guide £30-50
LOT 115	A Wemyss G. Hill Pottery limited edition figure of fisherman - H23cm	Guide £30-50
LOT 116	A Wemyss G. Hill Pottery Jubilee jug and bowl with ribbon design	Guide £30-50
LOT 117	A Wemyss G. Hill Pottery oval platter with fruit design, together with a Jubilee 2012 goblet	Guide £30-50
LOT 118	A Wemyss G. Hill Pottery limited edition figure of a fisherman - H23cm	Guide £30-50
LOT 119	A Wemyss G. Hill Pottery figure of a fisherwoman with basket on her back - H20cm	Guide £20-30
LOT 120	A Wemyss G. Hill Pottery limited edition figure of a fisherwoman - H22cm	Guide £30-50
LOT 121	A French walnut buffet with drawers and cupboards under - W90cm	Guide £40-60
LOT 122	Four Royal Doulton Brambly Hedge figures	Guide £20-25
LOT 123	Three Royal Doulton Brambly Hedge figures, a Brambly Hedge plate and a Steiff teddy bear	Guide £20-30
LOT 124	Ten Royal Doulton Winnie the Pooh figures	Guide £50-80
LOT 125	A Franz porcelain butterfly and flower design tea set	Guide £50-80
LOT 126	An oak framed double stool	Guide £10-20
LOT 127	Two cane DVD racks	Guide £10-15
LOT 128	Three Japanese bird pattern plates, together with two oriental figures	Guide £15-25
LOT 129	An air raid warden's bell, together with a brass lion's mask door knocker	Guide £15-25
LOT 130	An Art Nouveau style toilet mirror, brass hanging box, embosser etc	Guide £20-30
LOT 131	Alexander Gross - A Geographia folding map on linen of the Isle of Wight	Guide £20-30
LOT 132	A light oak sideboard with drawers and cupboards under - L127cm	Guide £50-80
LOT 133	The matching sideboard	Guide £50-80
LOT 134	A satin walnut dressing table, mirror to back, drawers and cupboards under - W107cm	Guide £40-60
LOT 135	A Bush vintage radio in cream	Guide £15-25
LOT 136	A bronze tripod stand with athemion design	Guide £30-50
LOT 137	A pair of oak hexagonal kaleidoscopes	Guide £30-50
LOT 138	A vintage lacemaker's lamp, together with two wooden swans	Guide £25-40
LOT 139	A pair of wooden bellows, together with a small Regency style mirror	Guide £10-20
LOT 140	An HMV mahogany cased table gramophone with exhibition needle arm	Guide £70-100
LOT 141	A brass chamber stick, together with various plated ware	Guide £10-15
LOT 142	A pair of Barr & Stroud military binoculars	Guide £20-30
LOT 143	A mixed media painting of a Cornish tin mine, together with various London and other prints	Guide £20-40
LOT 144	A Caithness glass vase, an Aynsley cup and saucer, Wedgwood jasperware etc	Guide £25-40
LOT 145	A collection of plated ware including a pair of Georgian style candlesticks	Guide £25-40
LOT 146	A set of Berghaus steak cutlery and kitchen knives	Guide £30-50
LOT 147	A Victorian gilt spelter mantle clock with two train movement, under glass dome	Guide £70-100
LOT 148	An assortment of brassware, together with various collectables	Guide £20-30



HRD AUCTION ROOMS

LOT 149	A Chinese table lamp with iron red carp design, together with another table lamp	Guide £30-50
LOT 150	Three Royal Worcester blue patterned jubilee plates, various plated ware etc	Guide £30-50
LOT 151	An oak sideboard with three drawers beside cupboard - W105cm	Guide £50-80
LOT 152	Sir John Frossart's Chronicles, volume I published London 1812, together with M H Spielmann - British Portrait Painting - published 1910, volume I	Guide £20-30
LOT 153	A oak two drawer dressing table, with mirror and stool	Guide £50-80
LOT 154	A Chinese cocktail cabinet with drawers and cupboards under - W82cm	Guide £40-60
LOT 155	A pine display cabinet with glazed top, drawers and cupboards under - W126cm	Guide £40-60
LOT 156	A collection of fourteen various paperweights	Guide £20-40
LOT 157	A mahogany chest of two short and three long drawers - W96cm	Guide £30-50
LOT 158	A King Weston Pottery seashore design bowl	Guide £25-40
LOT 159	A Rosenthal paperweight, two ship's decanters, and one other decanter	Guide £20-30
LOT 160	A bentwood armchair	Guide £10-15
LOT 161	A Yardley James Galway three part flute (cased)	Guide £30-50
LOT 162	A collection of various drinking glasses	Guide £20-30
LOT 163	A drop leaf dining table on tapered legs - 75x125cm when open	Guide £20-40
LOT 164	A mahogany effect extending dining table, together with the set of six dining chairs	Guide £30-50
LOT 165	A Portmeirion 'Crazy Daisy' cup and saucer, pair of brass dragons, plated ware etc	Guide £30-50
LOT 166	An Edinburgh Crystal pair of cut glass drinking glasses, cased bottle of Bell's Scotch whiskey, various decanters etc	Guide £30-50
LOT 167	A Victorian Pembroke table on platform base	Guide £30-50
LOT 168	A pair of Val St. Lambert glass bowls, pair of vintage style scales, plated ware etc	Guide £30-50
LOT 169	A pair of table lamps, Royal Doulton Arcadia tea ware etc	Guide £30-50
LOT 170	A continental style oak dining table, together with the set of four chairs	Guide £20-40
LOT 171	Ten Coalport Snowman figures, together with a sledge	Guide £50-80
LOT 172	Three Poole Pottery dolphins, Coalport 'Roaring Twenties' lady, Royal Standard tea ware etc	Guide £25-40
LOT 173	A Royal Doulton figure - The Wizard HN2877	Guide £20-40
LOT 174	Five early 19th century bar back dining chairs	Guide £30-50
LOT 175	A Bouzouki	Guide £10-20
LOT 176	Alwyn Crawshaw - pair of oil paintings depicting alpine scenes	Guide £40-60
LOT 177	A wrought metal hall table with glass top - W98cm	Guide £30-40
LOT 178	A Victorian pine chest of two short and two long drawers - W82cm	Guide £50-80
LOT 179	An oak side table, together with a pine towel rail	Guide £10-20
LOT 180	A 1920's gentleman's fitted wardrobe - W90cm	Guide £30-50
LOT 181	A reproduction Chinese red lacquer cabinet with six drawers under - W100cm	Guide £50-80
LOT 182	An oak framed dressing table mirror	Guide £20-30
LOT 183	A tall pine cupboard, upper and lower sections enclosed by a pair of fielded doors - H230cm, W100cm	Guide £20-40
LOT 184	A 1930's oak kitchen cabinet with drop down enamel work top	Guide £20-30
LOT 185	Two wood effect three drawer bedside/office cabinets	Guide £20-30
LOT 186	An electric fan in white	Guide £10-20
LOT 187	A pine wardrobe enclosed by a pair of panelled doors - W105cm	Guide £40-60
LOT 188	A vintage satin walnut wardrobe with carved panels and bevelled mirror to door - W130cm	Guide £50-80
LOT 189	The matching satin walnut chest of two short and three long graduated drawers - W115cm	Guide £50-80



HRD AUCTION ROOMS

LOT 190	A silver mounted cut glass decanter and stopper, together with another decanter	Guide £30-50
LOT 191	A Victorian black slate mantle clock with two train movement - W42cm	Guide £30-50
LOT 192	A pine gentleman's wardrobe with two drawers under - W83cm	Guide £30-50
LOT 193	A two tier inlaid mahogany pot stand	Guide £10-20
LOT 194	A pine coffee table on turned legs	Guide £10-20
LOT 195	A collection of Dad's Army DVDs, together with Ronnie Barker DVDs	Guide £20-30
LOT 196	An Alecto Historical Editions copy of the Domesday Book with introduction and maps	Guide £30-50
LOT 197	A black slate mantle clock with single train movement	Guide £10-15
LOT 198	A classical style porcelain pedestal	Guide £10-15
LOT 199	A pair of 19th century glasses with engraved hunting scenes, together with a large quantity of other glassware	Guide £15-25
LOT 200	A walnut writing slope, missing interior, together with two wooden boxes	Guide £15-30
LOT 201	A pink dolls house	Guide £10-15
LOT 202	A Jura Art Deco cased wall clock with visible pendulum	Guide £25-40
LOT 203	A two light hanging fitment, together with a Bosch coffee maker	Guide £15-30
LOT 204	A collection of boxed Cherished Teddies, together with various catalogues	Guide £30-50
LOT 205	A small collection of Royal Doulton Bunnykins, various linen and various mugs	Guide £30-40
LOT 206	An angle poise lamp, together with a vintage Dustette vacuum cleaner (for ornament only)	Guide £15-30
LOT 207	A reproduction brass telescope with tripod base, together with spare tripod	Guide £25-40
LOT 208	A pair of vintage cast iron bench ends	Guide £40-60
LOT 209	A 5' animated singing snowman	Guide £15-20
LOT 210	A nest of three hardwood occasional tables	Guide £20-30
LOT 211	A carved hardwood 'tree trunk' table	Guide £20-30
LOT 212	A Craftmatic four wheel mobility scooter DWR9560L010	Guide £50-80
LOT 213	A Sterling four wheel mobility scooter in red with charger	Guide £50-100
LOT 214	A French style extending dining table with two extra leaves - 260cm when extended, together with the set of nine dining chairs including two carvers	Guide £50-100
LOT 215	The matching 100cm sq occasional table with inset glass	Guide £30-50
LOT 216	The matching sideboard, two cupboards either side of four drawers - W170cm	Guide £30-50
LOT 217	A nest of two matching occasional tables	Guide £10-20
LOT 218	A Tiffany style bronze effect table lamp	Guide £40-60
LOT 219	A Tiffany style 'dragonfly' desk lamp	Guide £30-50
LOT 220	After Janet Sheath - three limited edition prints of Island post boxes	Guide £10-20
LOT 221	A selection of Royal Doulton and other glassware (some boxed)	Guide £25-40
LOT 222	Five Eglo boxed wall lights	Guide £10-20
LOT 223	A miniature musical barrel organ, hurdy-gurdy, together with a music box for restoration, puzzle box and vintage purse	Guide £30-50
LOT 224	A Chinese jar and cover, two green glass jugs, boxed vintage bus etc	Guide £20-40
LOT 225	A Royal Albert Old Country Roses coffee set	Guide £25-40
LOT 226	A set of six Royal Crown Derby 'Derby Border' dinner plates, together with the matching pair of oval dishes	Guide £15-30
LOT 227	A Clarice Cliff lotus design vase	Guide £25-40
LOT 228	A Myott Art Deco jug, six embossed Art Nouveau door plates, together with various coinage	Guide £20-30
LOT 229	A 1930's swivel office chair	Guide £30-50
LOT 230	A Turkish Dosemealti rug (Taurus Mountains) runner - 290x65cm	Guide £40-60



HRD AUCTION ROOMS

LOT 231	A two seater garden bench with wrought iron supports, the hardwood from the motor vessel New Close	Guide £70-100
LOT 232	A vintage black chest inscribed E Cluitt P.M.	Guide £30-40
LOT 233	A collection of WII games and accessories	Guide £10-20
LOT 234	A collection of various brassware and metalware	Guide £10-20
LOT 235	A vintage cooking stove, brass jardiniere and other metalware	Guide £20-30
LOT 236	An oak dining table on square legs - L135cm	Guide £30-50
LOT 237	A quantity of various silver plate, sundry ceramics etc	Guide £30-50
LOT 238	A Victorian carved oak side chair, gilt oval mirror, vintage teddy bear, together with an armchair	Guide £30-50
LOT 239	A 1930's Art Deco style coffee table	Guide £20-30
LOT 240	A floral decorated log bin with two handles	Guide £15-25
LOT 241	An Italian circular coffee table on centre column - diam 100cm	Guide £20-30
LOT 242	An Ipswich oak gate leg table - 130x140cm	Guide £20-40
LOT 243	A Selkirk paperweight, a Caithness paperweight, various militaria etc	Guide £20-40
LOT 244	A wall mounted barometer/thermometer, a pair of satsuma vases, other ceramics and glassware	Guide £20-40
LOT 245	Six Dresden style floral plates, together with an embroidery	Guide £20-30
LOT 246	A small collection of Denby 'Green Wheat' tea ware	Guide £15-25
LOT 247	An oak dining table on square legs - L160cm, together with five dining chairs	Guide £30-50
LOT 248	A pair of 1930's cane backed armchairs with cabriole legs	Guide £40-60
LOT 249	Three locomotives from The Great British Locomotive Collection	Guide £30-50
LOT 250	An assortment of cut glass vases, bowls and decanter	Guide £20-40
LOT 251	A Ridgeways 'Country Garden' tea set, together with various Johnson Brothers ceramics	Guide £20-40
LOT 252	A cherrywood sideboard with four drawers to centre - W130cm	Guide £30-50
LOT 253	A Dell monitor and hard drive, together with an Acer laptop	Guide £5-10
LOT 254	A military style table light, together with a motor bike montage	Guide £10-20
LOT 255	A Jouette glass figure of a bird, damaged	Guide £30-50
LOT 256	A cut glass table lamp with fringed shade	Guide £20-40
LOT 257	A Hornby locomotive - Princess Margaret Rose, together with two other locomotives	Guide £20-40
LOT 258	A Prima twelve place setting canteen of cutlery	Guide £30-50
LOT 259	A carved oak sideboard with drop flap and under tier - W102cm	Guide £25-40
LOT 260	A reproduction Chinese bowl, brass vase and cover, brass jardiniere etc	Guide £20-40
LOT 261	A pair of four drawer pine bedside chests	Guide £30-50
LOT 262	A satsuma charger with figure decoration - diam 38cm	Guide £30-50
LOT 263	A Royal Worcester oriental style tureen and cover, retailed by Mortlocks, damaged lid	Guide £20-30
LOT 264	A Victorian 'cane work' cheese bell	Guide £20-30
LOT 265	A Victorian pine side table with single drawer - W65cm	Guide £20-40
LOT 266	A pine chest of three drawers, together with a wine rack	Guide £20-30
LOT 267	Three Tiffany style wall light shades with fittings	Guide £30-50
LOT 268	A Tiffany style table lamp with bronze effect base	Guide £25-40
LOT 269	A vintage brass hand bell, together with a tea caddy	Guide £10-20
LOT 270	A Skylark Brand child's violin, cased	Guide £20-40
LOT 271	An inlaid mahogany side chair	Guide £5-10
LOT 272	A carved hardwood garden seat with 'bear' supports to either end - L175cm	Guide £100-150



HRD AUCTION ROOMS

LOT 273	Various fittings for Lamson wire line carriers	Guide £20-40
LOT 274	Two B&Q New York garden chairs, boxed	Guide £20-40
LOT 275	Sue Butcher - cane chair with posy - framed acrylic	Guide £20-40
LOT 276	A framed pub poster depicting various beer labels	Guide £10-15
LOT 277	A pair of 100cm oak beds with side rails and slats	Guide £20-40
LOT 278	Two golf bags containing various clubs	Guide £20-40
LOT 279	A three seater hardwood garden bench with heavy cast supports	Guide £40-80
LOT 280	A box of sundry pictures including a gouache of a liner, signed E Thomas	Guide £20-40
LOT 281	A table lamp made from a ship's log, model sailing yacht etc	Guide £20-40
LOT 282	A box of sundry pictures including watercolour of rural scene	Guide £20-40
LOT 283	A box of sundry pictures including a watercolour of classical building, signed M Davison	Guide £20-40
LOT 284	A Hotpoint Ice Diamond larder fridge	Guide £20-30
LOT 285	Five turned softwood fence posts	Guide £20-30
LOT 286	Aluminium extending ladder	Guide £30-50
LOT 287	An aluminium platform ladder	Guide £20-30
LOT 288	A Cycles of Yesteryear vintage style bicycle, for restoration	Guide £10-20
LOT 289	A Shop Rider four wheel mobility scooter in red with battery charger	Guide £50-100
LOT 290	A cast iron fireplace with fire guard - W62cm	Guide £20-30
LOT 291	A metal bench vice	Guide £10-20
LOT 292	A pair of cast iron gate posts, together with another post and two spoked cast iron wheels	Guide £20-40
LOT 293	A pair of pine framed leaded light French doors - each door 190x56cm	Guide £30-50
LOT 294	Two large and six small stoneware stepping stones	Guide £20-40
LOT 295	A turquoise glazed planter with plant	Guide £20-40
LOT 296	A pair of 19th century mahogany bedposts	Guide £20-30
LOT 297	Four garden tools, virtually as new	Guide £20-30
LOT 298	Two garden umbrellas, one blue, one green	Guide £20-40
LOT 299	An eighteen rung aluminium extending ladder	Guide £20-40
LOT 300	A 9k Italian gold 'cross link' bracelet (broken) - approx weight 8.2g	Guide £70-90
LOT 301	An 18ct multicolour gold bracelet - approx weight 8.9g	Guide £150-180
LOT 302	A 9ct gold 'snake' link bracelet - approx weight 6.8g	Guide £50-80
LOT 303	A 9ct gold bracelet set with twelve rubies and twelve diamonds - approx gross weight 7.5g	Guide £100-150
LOT 304	A 9ct gold seven bar gate bracelet with padlock clasp - approx weight 15.2g	Guide £130-150
LOT 305	A 14ct gold 'eagle' pendant - approx weight 5.7g	Guide £80-100
LOT 306	A 9ct gold and enamel Masonic signet ring with swivel top, size S - approx weight 7.3g	Guide £70-100
LOT 307	A 9ct gold dress ring set with white stones in a cluster setting, size M 1/2	Guide £40-60
LOT 308	A 9ct gold triple strand necklace chain, together with a 9ct gold three stone spinning pendant	Guide £50-80
LOT 309	A 9ct gold bangle with Celtic knot design - approx weight 9.9g	Guide £90-120
LOT 310	A gold plated ladies wristwatch with gold 'footprint' face on multi-link bracelet	Guide £30-50
LOT 311	A 9ct gold signet ring, size U 1/2 - approx weight 8g	Guide £70-90
LOT 312	A .875 gold pendant set with white and lilac coloured stones - approx gross weight 7g	Guide £60-90
LOT 313	A silver/silver gilt jewellery set consisting of necklace, bracelet and earrings	Guide £30-50



HRD AUCTION ROOMS

LOT 314	An 18ct gold herringbone link necklace chain - approx weight 15.2g	Guide £260-300
LOT 315	A 9ct locket pendant - approx gross weight 12.6g	Guide £100-120
LOT 316	A two tone yellow metal ring with two seed pearls in a floral crossover setting - size N 1/2	Guide £30-40
LOT 317	A 22ct gold necklace chain - approx weight 6.2g	Guide £120-140
LOT 318	A 9ct gold necklace chain, together with the matching 9ct gold bracelet - approx weight 2.2g	Guide £20-30
LOT 319	An 18ct gold engraved locket - approx gross weight 9.7g	Guide £170-200
LOT 320	A yellow metal pendant (mark unclear) with Egyptian hieroglyphics to both sides and a fine filigree border - approx weight 7.8g	Guide £60-80
LOT 321	A chunky silver gentleman's engraved identity bracelet - approx weight 63.1g/2.03 troy oz	Guide £20-30
LOT 322	A silver watch chain with t-bar - approx weight 19.5g	Guide £10-20
LOT 323	A pair of 9ct gold creole style earrings, together with another pair of 9ct gold earrings - approx total weight 3.3g	Guide £25-40
LOT 324	A 9ct gold locket, a yellow metal pendant (marks unclear), together with two odd 9ct gold creole earrings and a small bag of yellow metal off-cuts	Guide £70-90
LOT 325	A Celtic amber brooch, together with a three colour amber foliate design bracelet	Guide £40-60
LOT 326	A silver bracelet set with eight pieces of amber, an amber mounted oval silver pendant, an amber mounted bangle, together with a necklace of amber beads	Guide £50-80
LOT 327	A 9ct gold bar brooch, mounted with a dragonfly set with a blue stone - approx gross weight 4.1g	Guide £50-70
LOT 328	An 18ct gold ring set with thirteen small turquoise, size Q 1/2 - approx gross weight 3.3g	Guide £30-50
LOT 329	A 9ct gold ring with a single topaz surrounded by diamonds in a floral setting, size O 1/2	Guide £40-60
LOT 330	A Turkish yellow metal ring set with a single stone - size M 1/2	Guide £40-60
LOT 331	A 9ct gold and enamel Benzie's of Cowes four flag brooch - approx gross weight 3.8g	Guide £40-60
LOT 332	A 9ct gold crucifix pendant, a blue topaz set 9ct gold crucifix, a cameo pendant, a cameo pendant/brooch, together with a marcasite brooch	Guide £50-70
LOT 333	A 9k gold ring set with an oval Zambian amethyst (approx 30ct) - size N	Guide £90-110
LOT 334	A 9k gold ring set with an emerald cut London blue topaz (approx 26ct) - size N	Guide £90-110
LOT 335	A 9k gold ring set with a Swiss blue topaz surrounded by white zircon - size N	Guide £60-90
LOT 336	A 9k gold ring set with a blueberry quartz on diamond shoulders - size T	Guide £30-50
LOT 337	A 9k gold ring set with a solitaire Himalayan kyanite - size N	Guide £30-50
LOT 338	A 9k gold ring set with a single Turkish zultanite - size R	Guide £30-50
LOT 339	A 9k gold ring with Rio Grande green amethyst on zircon shoulders (approx 4.9ct) - size M 1/2	Guide £40-60
LOT 340	A 9k gold, tullelei and diamond cluster ring - size M 1/2	Guide £30-50
LOT 341	A 9k gold ring set with a Madeira citrine on white topaz shoulders - size Q	Guide £30-50
LOT 342	A 9k gold ring with Rio Grande amethyst on white sapphire set shoulders - size N	Guide £90-110
LOT 343	A 9k gold ring with emerald cut Zambian amethyst on diamond shoulders - size N	Guide £60-90
LOT 344	A 9k white gold ring with pear cut sky blue topaz in setting of zircon and aquamarine - size K	Guide £60-90
LOT 345	A 9k gold ring set with three hebei peridot - size L	Guide £30-50
LOT 346	A 22ct gold wedding band, size N - approx weight 7.1g	Guide £150-170
LOT 347	An 18ct gold ring with three diamonds in a rose and foliate setting, size P 1/2 - approx gross weight 11g	Guide £300-350
LOT 348	A 9ct gold spinel set eternity ring, size M 1/2	Guide £30-50
LOT 349	A 9ct gold scroll edged brooch with three gypsy set sapphires, and two diamonds	Guide £60-90



HRD AUCTION ROOMS

LOT 350	A 1940's vintage peach crepe cocktail dress with embroidery and diamante style embellishments	Guide £25-40
LOT 351	A 1920's hand sewn floral silk dress in cream, pink and green	Guide £25-40
LOT 352	A 1920's silk velvet wedding dress and petticoat	Guide £25-40
LOT 353	A 1930's peach 'Fleur de Chine' silk and lace robe	Guide £25-40
LOT 354	A Victorian black fitted top/jacket, together with a Victorian black skirt	Guide £25-40
LOT 355	A 1940's blue lace (possibly died) wedding dress with lace flowers to one shoulder	Guide £25-40
LOT 356	A 1920's black ribbed velvet coat fastened to the side with one button	Guide £25-40
LOT 357	A vintage full length hand sewn floral tapestry coat (age unknown)	Guide £25-40
LOT 358	A 1950's black velvet swagger coat by Hartnell (London/Paris)	Guide £25-40
LOT 359	A set of 1930's black silk and lace lounging pyjamas	Guide £25-40
LOT 360	An adjustable wooden hat block, a wooden hat stand, two other hat stands, together with a tease brush, and a wooden hem measure/marker	Guide £50-80
LOT 361	A 1930's blue velvet cap/sleeve, a black velvet cape, together with a box of assorted shawls c1920 and before	Guide £25-40
LOT 362	Three ostrich feather fans, one pink ostrich feather headress, twenty other large ostrich feathers, a box of assorted exotic feathers, together with a vintage black 'satin' hand painted stole etc	Guide £25-40
LOT 363	Two hat boxes containing various vintage hats and headresses, including two 1940's wedding headresses	Guide £25-40
LOT 364	A box of assorted coloured large feather, together with two other smaller boxes of assorted feathers	Guide £25-40
LOT 365	A vintage hat boxes containing three opera hats, together with a bowler hat	Guide £25-40
LOT 366	A German Tyrolean style vintage Huttersport Meran hat, a pith helmet, together with a vintage straw boater	Guide £25-40
LOT 367	Two very fragile Victorian bonnets, together with two 1920's ladies hats, and a 1940's ladies hat (all contained in two hat boxes)	Guide £25-40
LOT 368	A folder containing various fashion/design ephemera c1900 onwards, together with a papier mache model possibly for costume design	Guide £25-40
LOT 369	Two stoneware wall mounted horses heads	Guide £20-40
LOT 370	A Castor Turbo 25 petrol trimmer	Guide £30-50
LOT 371	A Hillbilly motorised golf trolley, together with golf bag and clubs	Guide £30-50
LOT 372	A two seater garden bench with table to centre	Guide £20-40
LOT 373	A two seater metal and wooden garden bench	Guide £20-40
LOT 374	A pair of square planters with moulded brick effect	Guide £20-40
LOT 375	Two stoneware pedestals, together with two stepping stones	Guide £20-40
LOT 376	A Faithfull wood turning lathe - bench mounted	Guide £80-150
LOT 377	A pair of cast stoneware classical style garden urns - H75cm	Guide £100-150
LOT 378	A rustic effect terracotta triple garden planter	Guide £20-40
LOT 379	A Montpellier washing machine	Guide £30-50
LOT 380	A Paslode Impulse IM350 nail gun	Guide £150-200
LOT 381	A Middle Eastern style rug with multiple border - approx 300x87cm	Guide £30-50
LOT 382	A gilt framed marine watercolour	Guide £20-30
LOT 383	Five stoneware garden figures including a gold painted Buddha	Guide £20-40
LOT 384	Two 19th century political prints, one published by J Gans, the other published by J McLean	Guide £50-80
LOT 385	An oak and metal three bottle tantalus, Betjemann's patent	Guide £40-60
LOT 386	A 19th century portrait of a gentleman, in shell and foliate gilt frame	Guide £40-80
LOT 387	A 19th century two gallon copper haystack measure	Guide £20-40



HRD AUCTION ROOMS

LOT 388	A Middle Eastern style rug with central medallion - approx 200x132cm	Guide £30-50
LOT 389	A Metrax Belgian tapestry - The Lady and the Unicorn - 145x115cm	Guide £40-60
LOT 390	After Jacqueline Penney - a pair of framed and glazed marine prints	Guide £20-40
LOT 391	A set of eight rush seated dining chairs	Guide £20-40
LOT 392	A pair of counter seats upholstered in white	Guide £10-20
LOT 393	Two white painted cane armchairs	Guide £10-20
LOT 394	A Miranda Amapola decorated guitar - 'Treacle Tart' - an Amapola guitar has been gifted to Paul McCartney	Guide £100-150
LOT 395	An inlaid mahogany armchair	Guide £10-20
LOT 396	A vintage leather suitcase with Isle of Wight Railway labels	Guide £20-30
LOT 397	An Indesit front loading washing machine	Guide £40-60
LOT 398	An Ikea Kattrup kelim - approx 170x240cm	Guide £40-80
LOT 399	A Black & Decker Professional drill, together with various other electrical and woodworking tools	Guide £30-50
LOT 400	An assortment of electrical accessories, boxed plane, tool boxes, electrical tools etc	Guide £30-50
LOT 401	A JCB boxed power planer, a boxed multi tool, together with an Einhell electric drill	Guide £40-60
LOT 402	Miranda Amapola - A decorated dummy (torso)	Guide £250-300
LOT 403	A miniature carved rocking horse, together with other carved wooden animals	Guide £20-30
LOT 404	A pair of 1920's oak framed adjustable lounge armchairs in the style of William Morris with barley twist supports	Guide £40-60
LOT 405	A bevelled mirror in pine frame	Guide £20-30
LOT 406	A wall mirror in pine frame	Guide £15-25
LOT 407	A bevelled mirror in gilt frame, overall size 115x145cm	Guide £40-60
LOT 408	A framed and glazed advertising sign, together with two sheet music covers	Guide £10-20
LOT 409	A Victorian overmantle in ebonized frame	Guide £10-20
LOT 410	A gilt mirror with centre raised panel	Guide £10-15
LOT 411	A green glazed planter with artificial bamboo	Guide £15-25
LOT 412	A set of eight blue plastic stacking chairs	Guide £10-20
LOT 413	A reproduction Brighton railway poster, together with two other prints	Guide £10-20
LOT 414	Six framed and glazed animal portraits	Guide £20-30
LOT 415	Walter Zigmond -- An oil on panel of a Vickers Valetta over Cowes, no.233 Squadron, 1956	Guide £20-40
LOT 416	An Illustrated London News plan of the Spithead Review 1856, framed	Guide £10-20
LOT 417	A framed and glazed watercolour depicting shells, together with other pictures	Guide £10-20
LOT 418	A Trio folding shooting seat	Guide £10-15
LOT 419	A John Lewis tubular framed lounge chair and stool with black leather upholstery	Guide £50-100
LOT 420	A vintage lounge armchair	Guide £5-10
LOT 421	A Laura Ashley two seater sofa upholstered in cream	Guide £30-50
LOT 422	A William and Mary style armchair upholstered in cream	Guide £30-50
LOT 423	A wing lounge armchair upholstered in velour	Guide £20-30
LOT 424	A reproduction map of the Isle of Wight, various coloured engravings, golfing prints etc	Guide £20-40
LOT 425	A bed chair upholstered in pale green	Guide £30-50
LOT 426	A wing lounge armchair upholstered in blue with white piping	Guide £20-40
LOT 427	Paul Jordon - six watercolours including four of Isle of Wight scenes	Guide £30-50
LOT 428	A Natuzzi three seater settee upholstered in ivory leather	Guide £100-200
LOT 429	The matching settee	Guide £100-200



HRD AUCTION ROOMS

LOT 430	A Tiffany style uplighter with gilt metal column	Guide £20-40
LOT 431	A wrought metal fireguard of scroll design, together with a metal hanging lamp	Guide £20-40
LOT 432	A lounge armchair and stool upholstered in dark blue leather	Guide £30-50
LOT 433	A Dryad of Leicester wooden framed loom - 175x115cm	Guide £50-100
LOT 434	A RevXtreme S100 exercise cycle	Guide £30-50
LOT 435	A vintage brass slipper box	Guide £10-20
LOT 436	A Holt 20 child's bicycle	Guide £10-20
LOT 437	A Singer commercial electric sewing machine	Guide £20-40
LOT 438	A white cane tub chair	Guide £10-20
LOT 439	A Next coffee table with shelf under, together with a nest of two occasional tables	Guide £20-40
LOT 440	A Steiff teddy bear display shelf complete with composition teddies	Guide £10-20
LOT 441	A Next television stand with two drawers either side of compartment	Guide £20-30
LOT 442	A Victorian inlaid walnut occasional table on quadruple supports	Guide £20-40
LOT 443	M Steele - watercolour of cherub, framed and glazed	Guide £20-30
LOT 444	A pair of Arthur Wood Staffordshire dogs, a collection of ceramic figures, Murano glass fish etc	Guide £20-30
LOT 445	A white painted chest of two short and four long drawers with turned handles - W86cm	Guide £20-40
LOT 446	Two framed and glazed posters - Venice Simplon Orient Express	Guide £20-30
LOT 447	A three seater bed settee upholstered in oatmeal	Guide £50-100
LOT 448	A Daler-Rowney beech artist's easel	Guide £30-50
LOT 449	A mahogany triple wardrobe with centre compartment - H215cm, W220cm	Guide £50-100
LOT 450	A pine framed dressing mirror	Guide £20-30
LOT 451	A vintage mahogany cased wall clock with fusee movement - overall diameter 45cm	Guide £80-150
LOT 452	A 1930's oak long cased clock, together with three chromium plated weights	Guide £30-50
LOT 453	A reproduction wall mounted lantern clock with floral dial	Guide £20-30
LOT 454	A 2nd WW five medal group - war medal, defence medal, 1939-45 star, Burma star, France and Germany star, together with the corresponding miniatures	Guide £50-80
LOT 455	A white Lloyd Loom armchair	Guide £10-20
LOT 456	A tub armchair upholstered in green, together with one other	Guide £20-30
LOT 457	A wing Georgian style armchair, back leg broken	Guide £10-15
LOT 458	A television stand, together with a Next two drawer bedside cabinet	Guide £10-20
LOT 459	A Next chest of two short and four long drawers - W84cm	Guide £30-50
LOT 460	A matching chest of drawers	Guide £30-50
LOT 461	The matching pair of bedside chests	Guide £30-50
LOT 462	The matching pair of bedside chests	Guide £30-50
LOT 463	A assortment of collectors plates - Franklin Mint and others	Guide £20-40
LOT 464	A Next dressing chest with lift up mirror and five drawers under	Guide £30-50
LOT 465	A quantity of Hornby O gauge engines, goods wagons, track and accessories, including the 4-4-2 locomotive Flying Scotsman	Guide £50-100
LOT 466	A Henry 200 vacuum cleaner with attachments	Guide £40-60
LOT 467	A selection of vintage gloves and accessories	Guide £20-40
LOT 468	A small collection of pictures including a Christmas 1850 print	Guide £5-10
LOT 469	A Prinz Magnon Duo projector, 8.4 digital LCD TFT television, Technics digital surround decoder etc	Guide £30-50
LOT 470	A Panasonic Viera 41 Full HD 3D television TX-P42GT20B (with glasses)	Guide £50-80



HRD AUCTION ROOMS

LOT 471	An assortment of photographic and other portraits including an oil painting of bearded man	Guide £30-50
LOT 472	A collection of pictures including floral prints and marine watercolour	Guide £20-40
LOT 473	An Isle of Wight map, framed and glazed, various Isle of Wight prints etc	Guide £20-40
LOT 474	Two bowler hats, a Steiff teddy bear, eight wristwatches	Guide £30-50
LOT 475	A pine chest on casters	Guide £20-30
LOT 476	Two boxed Tesco pineapple lighting pendants, together with three unboxed pendants	Guide £20-40
LOT 477	A German walnut wall clock with two train movement and visible pendulum	Guide £50-80
LOT 478	A bevelled wall mirror with cream frame	Guide £30-50
LOT 479	A double wall display cabinet, together with the collection of metal detecting finds	Guide £30-50
LOT 480	T W Quinn - oil painting of a scene in the Dordogne, in gilt frame	Guide £30-50
LOT 481	A mobility tubular framed walker, together with a Legxercise foot massager	Guide £5-10
LOT 482	A selection of archery equipment, together with three falconry items	Guide £30-50
LOT 483	Three framed and glazed aeronautical prints including Towards Victory	Guide £25-40
LOT 484	A gilt framed print of girl with dog, a selection of mirrors etc	Guide £20-40
LOT 485	A three piece cane conservatory suite comprising two seater settee, and two armchairs with loose cushions	Guide £50-100
LOT 486	An oriental hardwood extending dining table with two leaves - L225cm when extended, together with the set of eight dining chairs including two carvers	Guide £80-150
LOT 487	An Anglo Indian hanging mirror with bone chevron inlay (tambour shutter not working)	Guide £50-80
LOT 488	A three piece brush and mirror set	Guide £10-15
LOT 489	A Royal Worcester circular platter depicting rosemary	Guide £10-20
LOT 490	Four Chinese late 18th/early 19th century famille rose plates together with a Canton teapot	Guide £30-50
LOT 491	A boxed set of dominoes, together with other games and counters	Guide £25-40
LOT 492	A set of Britains figures - two policemen and four soldiers	Guide £15-25
LOT 493	A part set of Royal Worcester tea ware, and other ceramics	Guide £30-50
LOT 494	A 5' Dreamworld Posturepedic divan with drawer, and headboard	Guide £40-60
LOT 495	A Victorian tub chair upholstered in buttoned red fabric	Guide £10-15
LOT 496	A bevelled wall mirror in gilt and cream frame	Guide £25-40
LOT 497	A bevelled wall mirror in pine frame, together with one other	Guide £20-30
LOT 498	A circular oil painting depicting two figures in church, together with other pictures	Guide £30-50
LOT 499	An Ikea Brasa ceiling light, a pair of frosted glass ceiling lights, together with one other boxed light	Guide £30-50
LOT 500	A nest of circular cane tables, together with a cane table lamp	Guide £20-40
LOT 501	A two shelf cane display unit with cupboard to base, two stools and a three drawer chest	Guide £30-50
LOT 502	A Victorian cup inscribed W E Gladstone, died May 19th 1898	Guide £10-15
LOT 503	A silver plated pocket watch with chain	Guide £15-25
LOT 504	A cased pair of gilt opera glasses by Lemaire, Paris, together with one other pair	Guide £25-40
LOT 505	A silver and tortoiseshell circular box with filigree decoration	Guide £40-50
LOT 506	Four plated duck napkin rings, three Chinese silver coffee spoons etc	Guide £20-30
LOT 507	A continental silver miniature cup, together with a lotus shaped silver dish inscribed 'The Artful Dodger'	Guide £50-80
LOT 508	A cased silver spoon and pusher, together with another cased child's set	Guide £30-50
LOT 509	A set of twelve silver Apostle spoons by Walker & Hall	Guide £30-50



HRD AUCTION ROOMS

LOT 510	A pair of silver plated fish servers, button hook and shoe horn, together with a continental silver plated pair of sugar tongs	Guide £30-50
LOT 511	An Asprey & Co silver lotus shaped footed bowl, London 1911- approx weight 237g/7.6 troy oz	Guide £100-150
LOT 512	A continental silver basket with Chester import mark, blue glass liner, together with an Edinburgh condiment spoon	Guide £60-90
LOT 513	A Far Eastern white metal ceremonial spoon with embossed deity	Guide £40-60
LOT 514	A silver letter opener, together with a silver lidded condiment	Guide £30-50
LOT 515	A cased set of silver coffee spoons, together with a pair of silver horseshoes	Guide £30-50
LOT 516	A cased pair of shell salts with spoons, together with a cased set of twelve coffee spoons	Guide £25-40
LOT 517	A silver plated pin cushion, various brooches, plated quaich etc	Guide £25-40
LOT 518	A Japanese sake bowl, Watkins Bee Meter, knife rests etc	Guide £25-40
LOT 519	A 20-60x60 spotting scope on tripod	Guide £20-40
LOT 520	A limited edition signed print of grouse, a genealogical chart of the kings and queens of England, and other pictures	Guide £30-50
LOT 521	A collection of eight ships in bottles	Guide £20-30
LOT 522	An assortment of garden ornaments including Buddha and garden gnomes	Guide £20-30
LOT 523	A box of assorted copper and brass	Guide £20-30
LOT 524	A metal military trunk	Guide £10-20
LOT 525	An Ikea Vallentuna stool/settee	Guide £30-50
LOT 526	A red tubular mobility walker	Guide £5-10
LOT 527	Two pairs of Loblan riding boots, together with a riding hat, chaps, gaiters etc	Guide £30-50
LOT 528	A five light gilt metal chandelier with cut glass drops	Guide £50-80
LOT 529	A single folding bed with tubular frame	Guide £15-25
LOT 530	Two Royal Worcester figures - Crystal Ball and Claudia, together with three other female figures	Guide £25-40
LOT 531	Six Pets with Personality figures including a chihuahua	Guide £25-40
LOT 532	A Beko fridge freezer in silvered finish	Guide £30-50
LOT 533	Three Perthshire paperweights including millefiori	Guide £50-80
LOT 534	A Paul Ysart paperweight with lampwork floral design	Guide £70-100
LOT 535	A Whitefriars faceted paperweight with rings of flowers	Guide £30-50
LOT 536	A Whitefriars Caithness faceted paperweight with flower design, together with another Whitefriars Caithness paperweight	Guide £50-80
LOT 537	An Isle of Wight Glass paperweight with floral design	Guide £30-50
LOT 538	A Whitefriars faceted glass paperweight with spiral floral design	Guide £30-50
LOT 539	An Alan Scott cherry blossom paperweight with two scramble design paperweights	Guide £25-40
LOT 540	A millefiori paperweight/scent bottle	Guide £30-50
LOT 541	A scrambled glass paperweight, a Perthshire Christmas paperweight, Murrina paperweight, together with one other	Guide £30-50
LOT 542	A M'dina glass paperweight	Guide £20-40
LOT 543	An overlaid faceted glass paperweight with spiral decoration	Guide £40-60
LOT 544	Two small Perthshire paperweights, a John Deacons floral paperweight, together with one other	Guide £40-60
LOT 545	A faceted glass paperweight with flower and fruit design	Guide £30-50
LOT 546	A Paul Ysart paperweight marked H	Guide £40-60
LOT 547	Two Brucella Cristalli paperweights, one with fish design, one with tree design	Guide £30-50



HRD AUCTION ROOMS

LOT 548	A Perthshire style drinking glass, together with a frosted glass specimen vase with speckled design	Guide £30-50
LOT 549	A Whitefriars Caithness paperweight 'Victorian Memories', together with a faceted Whitefriars paperweight	Guide £40-60
LOT 550	A Whitefriars faceted domed paperweight with millefiori design, together with a Whitefriars paperweight 'Amethyst Bouquet'	Guide £40-60
LOT 551	A faceted glass paperweight on latticino ground, together with a John Deacons paperweight dated 2001	Guide £40-60
LOT 552	A 1978 Jubilee paperweight, together with a green glass paperweight	Guide £30-50
LOT 553	A Perthshire glass paperweight with swirl design, together with another Perthshire paperweight with flower design	Guide £40-60
LOT 554	A John Deacons paperweight with floral design, a small Perthshire paperweight, together with three others (5)	Guide £40-60
LOT 555	A Scottish paperweight with spiral design, a small floral paperweight and one other	Guide £30-50
LOT 556	An assortment of costume jewellery	Guide £20-30
LOT 557	An assortment of costume jewellery	Guide £20-30
LOT 558	Various diamante jewellery, together with black sequined items	Guide £20-30
LOT 559	Various Swarovski crystal figures, together with various gilt costume jewellery	Guide £30-50
LOT 560	A travelling thermometer, silver bladed penknife and various jewellery	Guide £30-50
LOT 561	Two framed First World War medals awarded to 59377 Dvr A Workman RA - War Medal and 14/15 Star	Guide £25-40
LOT 562	A tray of costume jewellery etc	Guide £20-40
LOT 563	A tray of costume jewellery	Guide £20-30
LOT 564	A Scottish ceremonial dirk, together with various coins	Guide £10-20
LOT 565	An assortment of jewellery, mainly gold plated, together with a modern pocket watch	Guide £20-40
LOT 566	A quantity of UK and foreign coinage	Guide £20-30
LOT 567	A tray of costume jewellery etc	Guide £30-40
LOT 568	A Second World War six medal Naval General Service group comprising -- Naval General Service medal with Palestine 1936-1939 clasp awarded to MX. 45212 E.E. Thaxter E.R.A.3.R.N., together with War medal (oak leaf), 1939-45 star, Atlantic star, Pacific star	Guide £150-200
LOT 569	A vintage Motorola 8000S cellular portable telephone	Guide £20-30
LOT 570	A collection of six gents and ladies wristwatches	Guide £30-50
LOT 571	A First World War medal trio awarded to 2420 Pte E K Yorke E.Kent.R., together with a First World War pair awarded to GS-69819 Pte W R Cook R.Fus, together with various medallions	Guide £50-80
LOT 572	An assortment of English and foreign costume jewellery, necklaces, bangles etc	Guide £40-60
LOT 573	A malachite necklace, coral necklace and two other necklaces	Guide £40-60
LOT 574	A collection of agate and other necklaces (7)	Guide £40-60
LOT 575	A cultured pearl necklace, a wristwatch and various costume jewellery	Guide £40-60
LOT 576	A blue album of first day covers, together with a green stamp album containing mint blocks and other stamps	Guide £30-50
LOT 577	Two blue albums containing mint stamp packs	Guide £40-60
LOT 578	Two albums containing mint stamp packs, together with some loose stamps	Guide £40-60
LOT 579	A small stamp collection, some loose, some in albums	Guide £20-30
LOT 580	Two carnival glass bowls with holly design	Guide £20-30
LOT 581	A Royal Doulton figure - Cherrie	Guide £10-15
LOT 582	Four Halcyon Days pill boxes	Guide £50-80
LOT 583	A studio glass vase of pink swirl design	Guide £20-30



HRD AUCTION ROOMS

LOT 584	A Royal Worcester blush ivory floral pattern jug	Guide £30-50
LOT 585	A Troika cube vase with sailing ship design	Guide £30-50
LOT 586	A Whitefriars blue glass vase with bark effect	Guide £30-50
LOT 587	A Royal Doulton figure - Lady Charmaine HN1949	Guide £10-20
LOT 588	A vintage leather boot with hat and other pins in pin cushion, together with a ladies coin purse	Guide £30-50
LOT 589	A Royal Doulton figure - Welsh Beauty	Guide £10-15
LOT 590	A Royal Doulton figure - Joanne HN5562	Guide £10-15
LOT 591	A Royal Doulton figure - Ninette HN2379	Guide £10-15
LOT 592	A Clarice Cliff Bizarre side plate in the Delicia Pansies pattern	Guide £25-40
LOT 593	A third edition of Mitchell Motor Works 'Motor Roads to London'	Guide £10-20
LOT 594	An Austrian patent musical table lighter with Scottish piper surmount	Guide £30-50
LOT 595	A quantity of various UK coinage	Guide £10-20
LOT 596	A quantity of UK coinage	Guide £10-20
LOT 597	A tray of various Matchbox and other die cast toys, together with a Barbie doll	Guide £30-50
LOT 598	Approximately eighty-five Royal Mail mint stamp presentation packs	Guide £60-80
LOT 599	A collection of Wills and Players cigarette cards, together with various tea cards	Guide £20-40
LOT 600	Four albums of vintage cigarette cards including Ogdens Alphabet cards	Guide £60-80
LOT 601	An album of stamps Queen Victoria to present day	Guide £20-40
LOT 602	A jewellery box containing assorted costume jewellery	Guide £30-50
LOT 603	A 9ct rose gold wedding band - approx 3.5g	Guide £30-40
LOT 604	A 22ct gold wedding band - approx weight 2.6g	Guide £50-60
LOT 605	An 18ct gold ring set with diamond cluster	Guide £300-400
LOT 606	An 18ct gold locket - approx weight 8.3g	Guide £130-150
LOT 607	An 18ct gold three stone ring, one stone missing	Guide £30-50
LOT 608	An engraved silver bangle, Birmingham 1954	Guide £20-30
LOT 609	A Montrose Celtic design cross set with hardstones on a sterling silver necklace chain	Guide £30-50
LOT 610	A Britannia silver bangle, London 1983	Guide £25-35
LOT 611	A Scottish hardstone brooch in the form of a sword and a shield	Guide £30-50
LOT 612	A 9ct gold necklace chain - approx weight 2g	Guide £20-30
LOT 613	An Ansonia gem encrusted pocket watch, together with a military pocket watch	Guide £25-40
LOT 614	A silver vesta case, together with an engraved silver pill box	Guide £30-50
LOT 615	A Timeroy pocket watch, 9ct gold mounted cheroot holder, lead animals etc	Guide £30-50
LOT 616	A tray of assorted jewellery including a 9ct gold identity bracelet - approx weight 3g	Guide £50-70
LOT 617	A cased National Service medal, together with various coins and jewellery	Guide £20-40
LOT 618	Two watches and assorted costume jewellery	Guide £20-40
LOT 619	E Mullert - interior scene - 42x55cm oil, framed and glazed	Guide £50-100
LOT 620	Four grey metal garden chairs, together with stools	Guide £30-50
LOT 621	Six metal multi-drawer engineers cabinets - each 44x92cm	Guide £50-80
LOT 622	Eric Tansley - oil painting of Bembridge Windmill - overall size 62x90cm	Guide £30-50
LOT 623	After David Shepherd - a limited edition signed print of two elephants, 50/850, framed and glazed	Guide £30-50
LOT 624	A Beswick grey gloss shire horse no.818	Guide £25-40
LOT 625	An Erbauer electric tile cutter	Guide £20-40
LOT 626	Two Naval Lieutenant Commander dress jackets	Guide £40-60



HRD AUCTION ROOMS

LOT 627	Four Royal Doulton Whyte & Mackay boxed whiskey decanters - Scottish owls	Guide £50-80
LOT 628	Three carved agate figures of birds, each standing upon a rough hewn agate base	Guide £15-25

CONDITIONS OF SALE

HRD Auction Rooms Ltd (hereinafter called the auctioneers) conduct business under the following Conditions of Sale.

1. Definitions

a) 'deliberate forgery' means an imitation made with the intention of deceiving as to authorship, origin, date, age, period, culture or source, but which is unequivocally described in the catalogue as being the work of a particular creator and which, at the sale date, had a value materially less than it would have had if it had been as described in the catalogue; b) 'terms of consignment' means the stipulated terms and rates of commission under which the auctioneers accept instructions from the vendor or his agent; c) 'hammer price' means the level of bidding reached when the auctioneer brings down the hammer; d) 'total amount due' means the hammer price together with the premium, VAT chargeable and any other charges payable by the defaulting buyer under these conditions; e) 'sale proceeds' means the net amount due to the seller, being the hammer price of the lot sold less commission at the standard rate, VAT chargeable and any other amounts due to us by the seller in whatever capacity and however arising.

2. Bidding Procedure

a) bidders are required to register their particulars before bidding and to satisfy themselves as to the security arrangements at the saleroom; b) the maker of the highest bid accepted by the auctioneer shall be the buyer at the hammer price; c) any dispute shall be settled at the auctioneer's absolute discretion by reoffering the lot concerned; the auctioneer shall act reasonably in this matter; d) bidders shall be deemed to act as principals; e) the auctioneer has the right to bid on behalf of the seller up to the amount of any reserve and to refuse any bid; f) bidding increments shall be at the auctioneer's sole discretion.

3. The Purchase Price

The buyer shall pay the hammer price together with a premium of 18% inc VAT at the current rate.

4. Value Added Tax

VAT (at the current rate) on the hammer price is imposed by law on all lots marked with a (*).

5. Payment

Accounts must be settled in pounds sterling within two working days of the auction. Proof of identity may be required. Cheques will have to be cleared before purchases can be collected. Any payments may be applied towards any sums owing by you to us on any account whatever, without regard to any directions of you or your agent, whether expressed or implied.

6. Title and Collection of Purchases

Ownership will not pass to the buyer until full payment has been made. The buyer must, at their own risk and expense, clear their purchases from the saleroom within two working days of the auction date, or upon the clearance of any cheque used for payment, after which you will be responsible for any removal, storage and insurance charges.

7. Non - Payment or Failure to Collect Purchases

If any lot is not paid for in full or taken away in accordance with these conditions or if there is any other breach of these conditions, we, as agents for the seller and on our own behalf, shall at our absolute discretion and without prejudice to any other rights we may have, be entitled to carry out the following rights and remedies: a) to proceed against you for breach of contract; b) to rescind the sale of that lot and your other purchased lots; c) to resell the lot (by auction or public treaty), in which case you shall be responsible for any resulting shortfall (after crediting any part payment and adding any resale costs); any surplus so arising shall belong to the seller; d) to remove, store and insure the lot at your expense; e) to charge interest at a rate not exceeding 1.5% per month on the total amount, to the extent it remains unpaid for more than two working days after the sale; f) to retain that or any other lot sold until you pay the total amount due; g) to reject or ignore bids from you or your agent at future auctions or to impose conditions before any such bids shall be accepted h) to apply any proceeds of sale of other lots due to you, or in future becoming due to you, towards the settlement of the total amount due and to exercise a lien (that is a right to retain possession of any of your property in our possession for any purpose until the debt due is satisfied). We shall pursue these rights and remedies only so far as is reasonable to make appropriate recovery.

8. Third Party Liability

All members of the public on our premises are there at their own risk and must note the lay-out of the accommodation and security arrangements. Accordingly neither the auctioneers nor their employees or agents shall incur liability for death or personal injury (except as required by law by reason of our negligence) or similarly for the safety of the property of persons visiting the saleroom.

9. Commission Bids

Whilst prospective buyers are strongly advised to attend the auction and are always responsible for any decision to bid for a particular lot and shall be assumed to have carefully inspected and satisfied themselves as to its condition, we will, if so instructed clearly in writing, execute bids on their behalf. Neither the auctioneers nor their employees or agents shall be responsible for any failure to do so save where such failure is unreasonable. Where two or more commission bids at the same level are received, we reserve the right in our absolute discretion to prefer the first bid so made.

10. Warranty of Title and Availability

The seller warrants to the auctioneer and the buyer that the seller is the true owner of the property consigned or is properly authorised by the true owner to consign it for sale and is able to transfer good and marketable title to the property free from any third party claims.

11. Agency

The auctioneer normally acts as agent only and disclaims any responsibility for default by sellers or buyers.

12. Terms of Sale

The seller acknowledges that lots are sold subject to the stipulations of these conditions in their entirety and on the terms of consignment as notified to the vendor on the reverse of the entry form.

13. Right of Admission

The auctioneer shall have the right, at our discretion, to refuse admission to the auction rooms or attendance at our auctions by any person.

14. Descriptions and Condition

Whilst we strive to describe lots accurately, it may be impractical for us to carry out exhaustive due diligence on each lot. Prospective buyers are given ample opportunities to view and inspect before any sale and they (and any independent experts on their behalf) must satisfy themselves as to the accuracy of any description applied to a lot. Prospective buyers also bid on the understanding that, inevitably, representations or statements by us as to authorship, genuineness, origin, date, age, provenance, condition or estimated selling price involve matters of opinion. We undertake that any such opinion shall be honestly and reasonably held and accept liability for opinions given negligently or fraudulently. Subject to the foregoing neither we, the auctioneer, nor our employees or agents nor the seller accept liability for the correctness of such opinions, and all conditions and warranties whether relating to description, condition or quality of lots, express, implied or statutory, are hereby excluded. This condition is subject to the next condition concerning forgeries. Private treaty sales made under these conditions are deemed to be sales by auction for the purposes of consumer legislation.

15. Forgeries

Notwithstanding the preceding condition, any lot which proves to be a deliberate forgery (as defined) may be returned to us by you within 14 days of the auction provided it is in the same condition as when bought, and is accompanied by particulars identifying it from the relevant catalogue description and a written statement of the defects. If we are satisfied from the evidence that the lot is a deliberate forgery, we shall refund the money paid by you for the lot including any buyer's premium provided that 1) if the catalogue description reflected the accepted view of scholars and experts at the date of the sale or 2) you personally are not able to transfer a good and marketable title to us, you shall have no rights under this condition. The right of return provided by this condition is additional to any right or remedy by law or by these conditions of sale.

16.

Any right to compensation for losses, liabilities and expenses incurred in respect of and as a result of any breach of these conditions and any exclusions provided by them shall be available to the seller and/or the auctioneer, as appropriate. Such rights and exclusions shall extend to and be deemed to be for the benefit of employees and agents of the seller and/or the auctioneer who may themselves enforce them.

17.

Any notice to any buyer, seller, bidder or viewer may be given by first class mail or Swiftmail, in which case it shall be deemed to have been received by the addressee 48 hours after posting.

18.

Any indulgence extended to bidders, buyers and sellers by us, notwithstanding the strict terms of these conditions or terms of consignment, shall affect the position at the relevant time only and in respect of that particular concession only; in all other respect these conditions shall be construed as having full force and effect.

19.

English law applies to the interpretation of these conditions.

CONDITIONS OF SALE - INFORMATION FOR BUYERS

1. Agency

HRD Auction Rooms Ltd contract as agents for the seller, whose identity is not disclosed, for reasons of confidentiality. As a buyer, your primary contract is with the seller.

2. Estimates

Buyer's premium and VAT are not included in the estimates given. If there is a reserve, this will not be above the lower estimate. The auctioneers prepare estimates some time in advance of the sale, and as estimates are not definitive, please ask if there has been any revision.

3. The Purchase Price

The buyer will pay the hammer price together with a premium of 18% inc VAT at the appropriate rate.

4. VAT

The symbol (*) indicates that VAT at the current standard rate is payable by the purchaser on the hammer price, as well as being an element in the buyer's premium. VAT will be charged if the seller is registered for VAT and is not operating the dealer's margin scheme. If there is no (*) beside the lot number, no VAT will be payable. In this case the lot is sold under the auctioneer's margin scheme and it should be noted that VAT included within the buyer's premium is not recoverable as input tax.

5. Inspection

HRD Auction Rooms Ltd will be pleased to assist buyers with inspection of goods. Buyers must accept responsibility for inspecting and investigating lots in which they have an interest. In particular, mechanical goods of any age are not guaranteed to be in working order. Please see our conditions of sale regarding 'forgeries'.

6. Electrical Goods and Gas Appliances

In fine art sales electrical goods are sold as 'antiques' only and, if purchased for use, must first be checked over for compliance with safety regulations by a qualified electrician. In general household sales electrical goods and household appliances are sold on the strict understanding that these have only been safety tested and are sold without warranties or any guarantees as to serviceability.

7. Books

HRD Auction Rooms Ltd do not guarantee the completeness of any book and buyers are urged to inspect lots themselves.

8. Export Licenses

An export licence is required for certain items leaving the United Kingdom. The obtaining of the relevant licence is the responsibility of the buyer.

9. Bidding

Bidders will be required to register at least one hour before the sale commences and lots will be invoiced to the name and address on the registration form. Some form of identification may be required. If you require telephone bidding, please make enquiries on the day prior to the auction, at the latest. No lots will be transferred to another purchaser.

10. Commission Bidding

HRD Auction Rooms Ltd will be pleased to accept commission bids up to one hour before the start of the auction. Remember that a buyer's premium of 15% + VAT will be added to successful bids. Commission bids are executed as cheaply as possible, having regard to any reserve and competing bids. If two buyers submit identical bids the auctioneers will prefer the first bid received.

11. Methods of Payment

Generally, cheques tendered will need to be cleared before removal of goods is permitted. Credit cards (subject to a surcharge), debit cards and cash are the preferred methods of payment. Please discuss with our office if other methods are envisaged.

12. Online bidding via the-saleroom.com

In completing the bidder registration on www.the-saleroom.com and providing your credit card details and unless alternative arrangements are agreed with HRD Auction Rooms Ltd you: 1) authorise HRD Auction Rooms Ltd, if they so wish, to charge the credit card given in full or part payment, including all fees, for items successfully purchased in the sale via the-saleroom.com, and 2) confirm that you are authorised to provide these credit card details to HRD Auction Rooms Ltd through www.the-saleroom.com and agree that HRD Auction Rooms Ltd are entitled to ship the goods to the card holder name and card holder address provided in fulfilment of sale. Any lots purchased via the-saleroom.com will be subject to an additional 3% +VAT surcharge on the hammer price.

13. Collection and Storage

It is important that purchases are paid for and collected within two working days of the auction. Any delay may involve the buyer paying storage charges. We have our own transport department, and will be pleased to quote you for this service. If you require delivery, let the office know immediately after the auction. We also have a post and packing service.

14. Terms and Condition

All sales are conducted according to our full conditions of sale, and our staff will be happy to help you if there is anything you do not fully understand.

15. Illustrations, Estimates and Condition Reports

Virtually all lots in the Fine Art sales are illustrated on our website, but if you need a more detailed image, we will be pleased send it via email. Estimates are prepared in advance of the sale and are sometimes revised. We are always willing to convey our opinion of the expected price of any lot. An opinion of condition is not normally printed in the catalogue, but intending purchasers are welcome to request a condition report. However, please note that, while we aim to give an accurate description, the responsibility is with the buyer and we recommend that, if possible, you inspect the lot yourself. We regret that we cannot deal with image and condition requests on the actual auction day.

16. Telephone and Internet Bidding

At our Fine Art sales we offer telephone and internet bidding on the major lots. We are always pleased to assist you with these services, but all enquiries must be received before the auction day. Any internet purchases via the-saleroom.com will be subject to an additional 3% +VAT commission charge on the hammer price.

EXPLANATION OF PICTURE CATALOGUING TERMS

A work catalogued with the full name of the artist in our opinion, is or is probably a work by that artist. However, buyers are respectfully reminded to satisfy themselves before bidding, as the catalogue description does not represent a certificate of authenticity. Otherwise the following terms are used:

'Attributed to' ... in our opinion the work is probably by the artist named in whole or in part.

'Follower of' ... in our opinion the work is executed in the named artist's style.

'Manner of' ... in our opinion the work is executed in the named artist's style but is of considerably later date.

'School (place and date)' ... in our opinion the work was executed in that location at that time

'After' ... in our opinion the work is a copy of a known painting by the named artist.

'Signed' ... in our opinion the signature is by the hand of the artist stated.

'Bears signature' ... in our opinion there is an element of doubt over the signature or it has been added by another hand.

DROITE DE SUITE OR ARTISTS RESALE RIGHT

In accordance with the Artists Resale Rights Regulations 2006, all lots marked '(d/s)' which sell for 1000 Euros or more are subject to a resale royalty charge, payable by the bidder. This royalty will be charged at a rate of 4% of the hammer price for lots selling above 1000 Euros and below 50000 Euros. For lots selling above this figure the fee is calculated on a sliding scale. These charges are paid to the Design and Artists Copyright Society (DACS). No VAT is levied on this royalty charge. Further information can be obtained from the DACS website (www.dacs.org.uk).

